

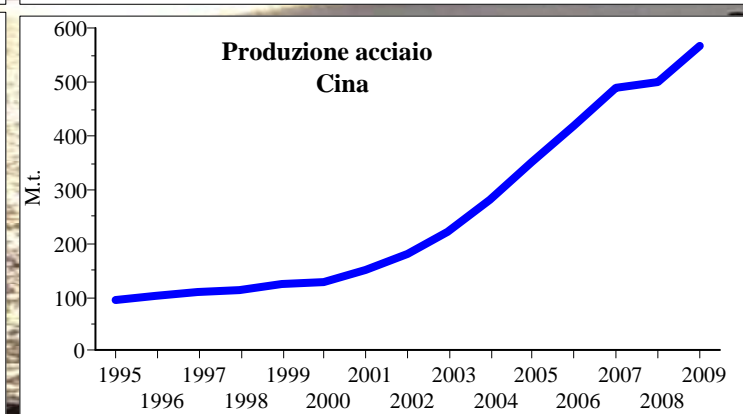
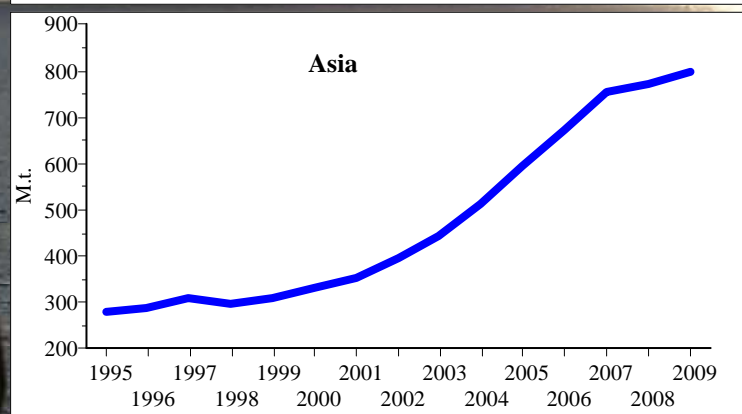
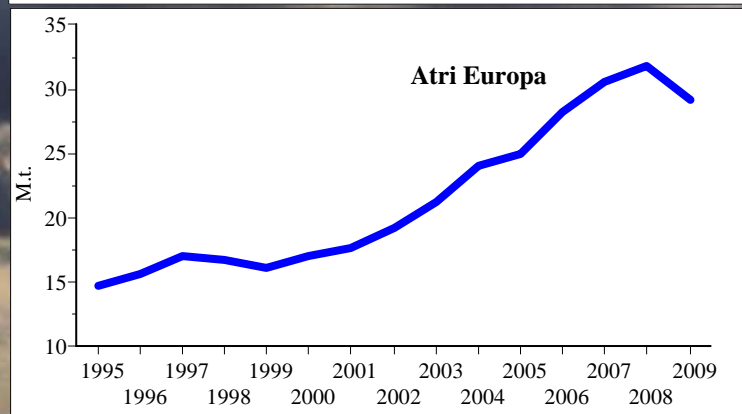
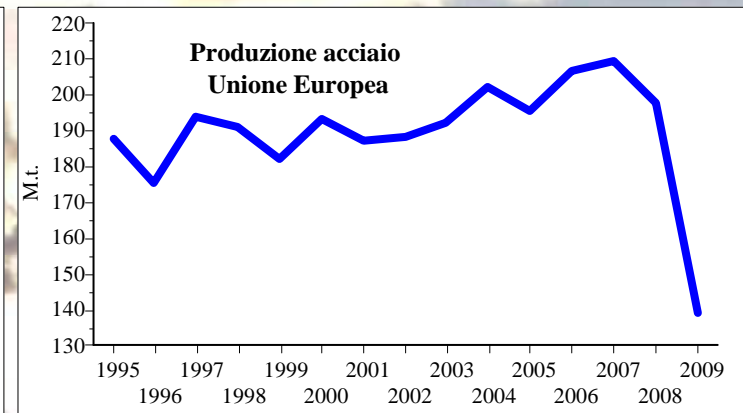
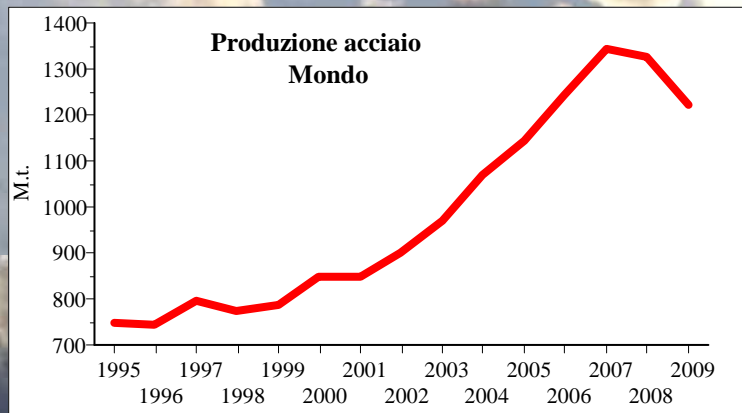
Osservatorio Congiunturale

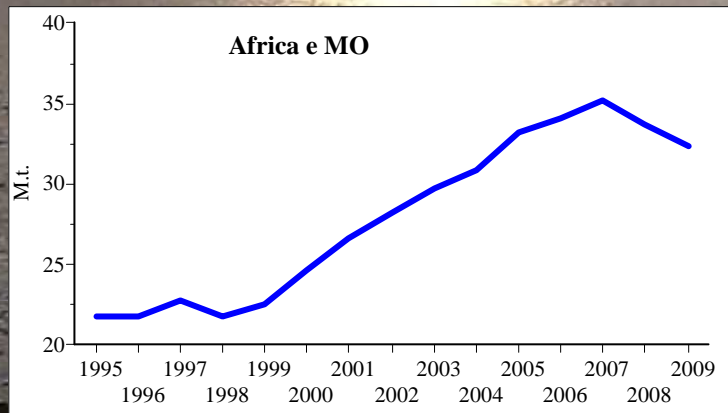
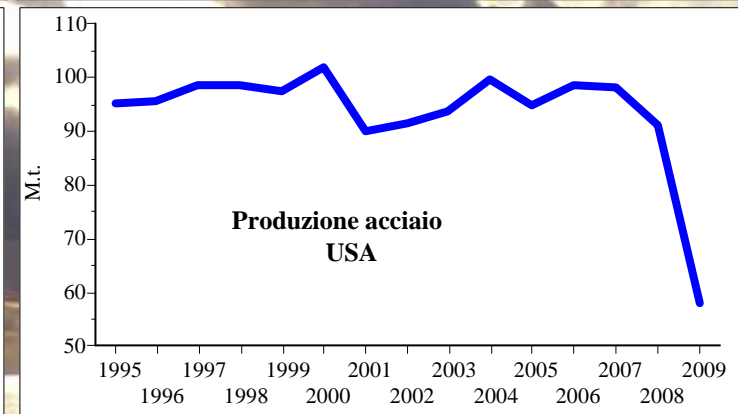
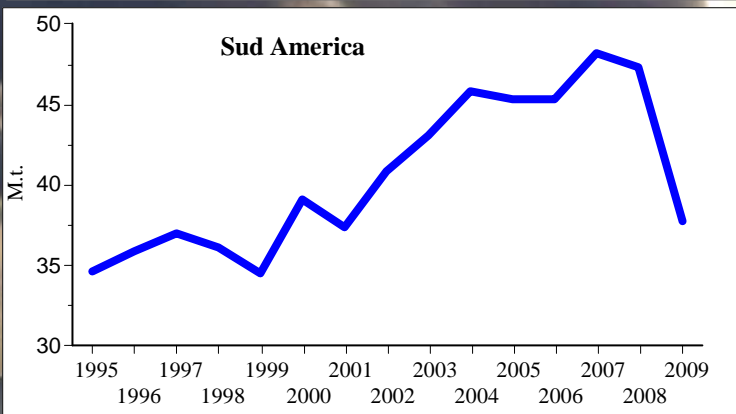
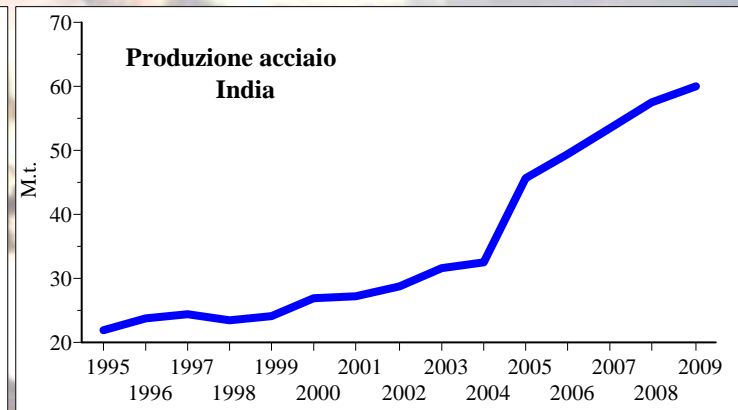
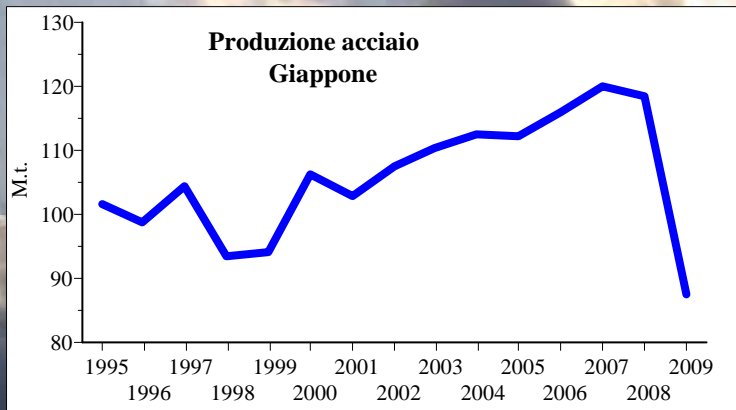
Siderurgia

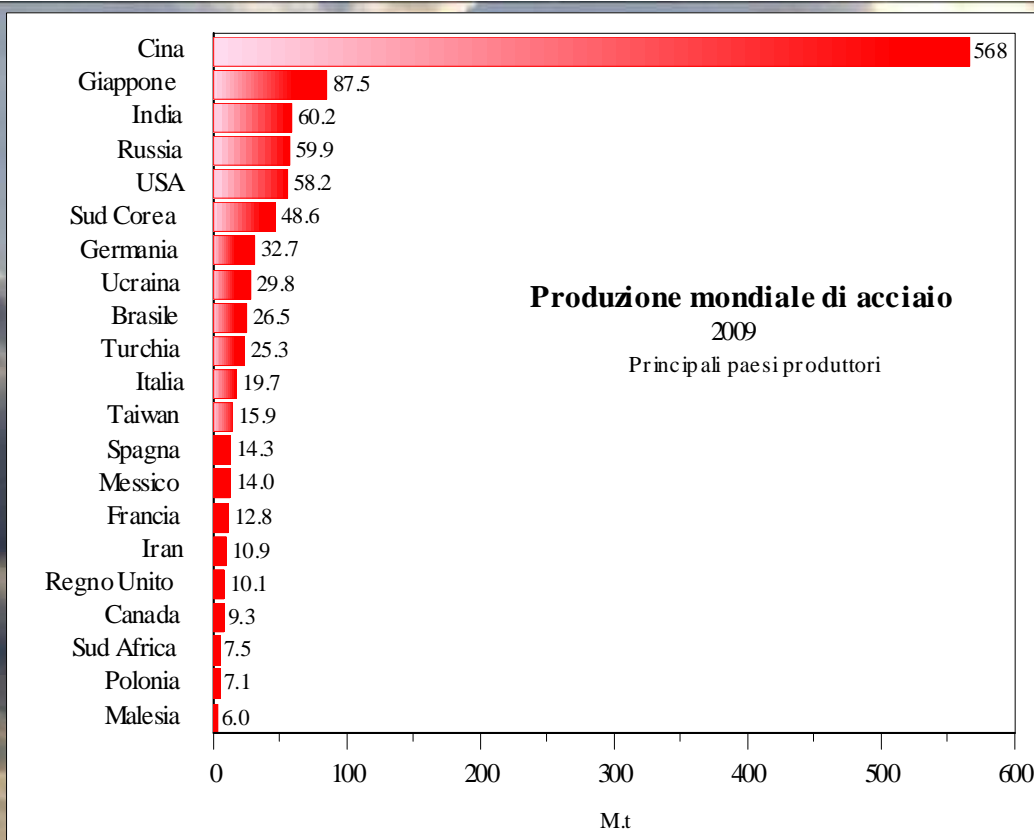
Milano
marzo 2010



Federacciai

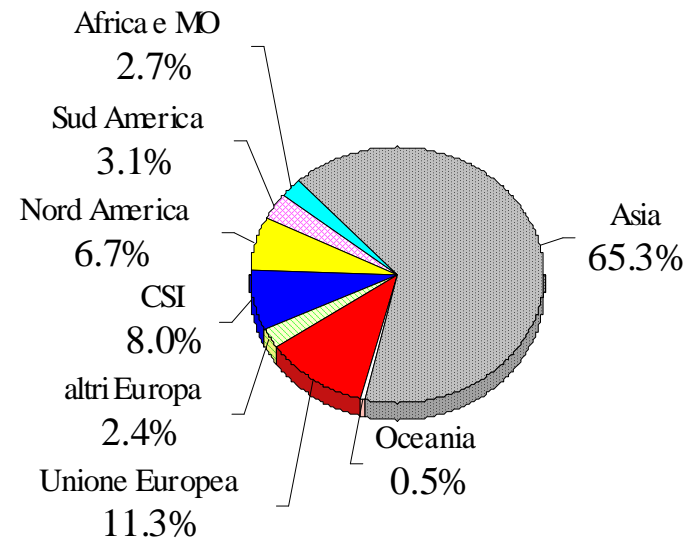


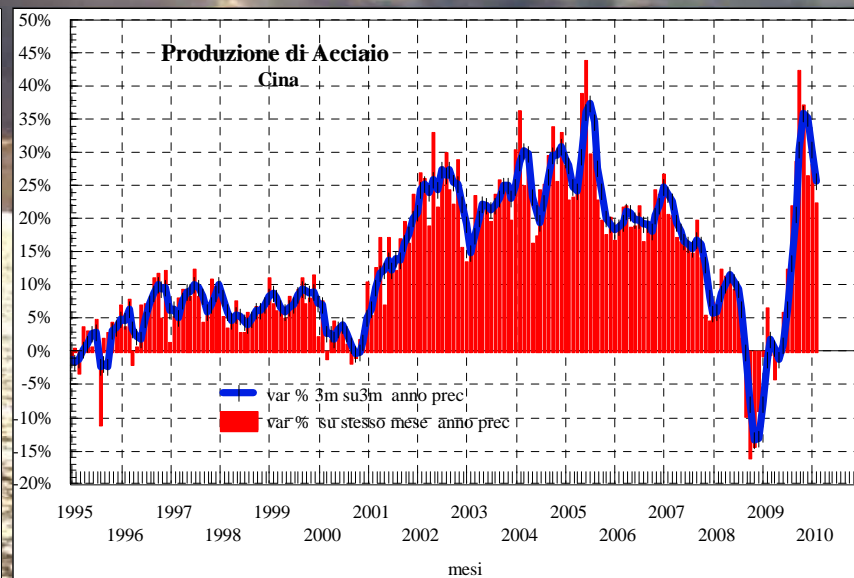
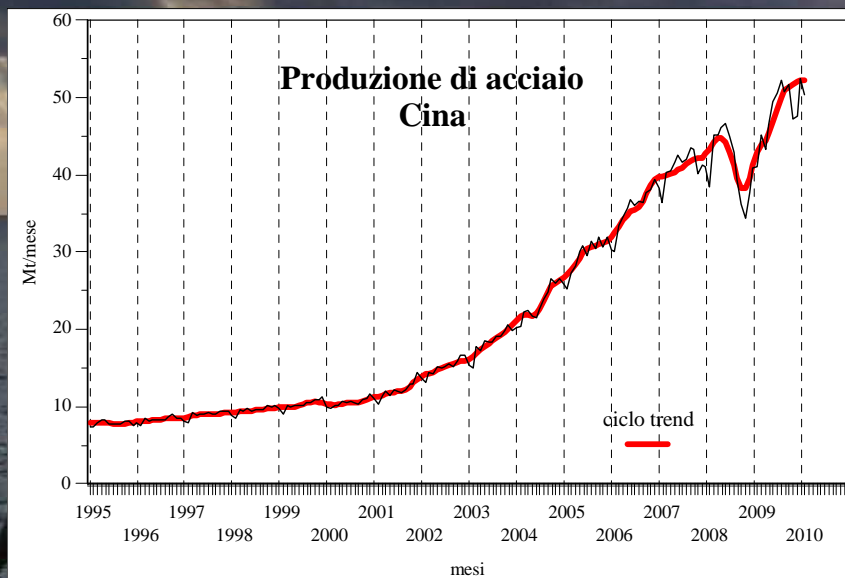
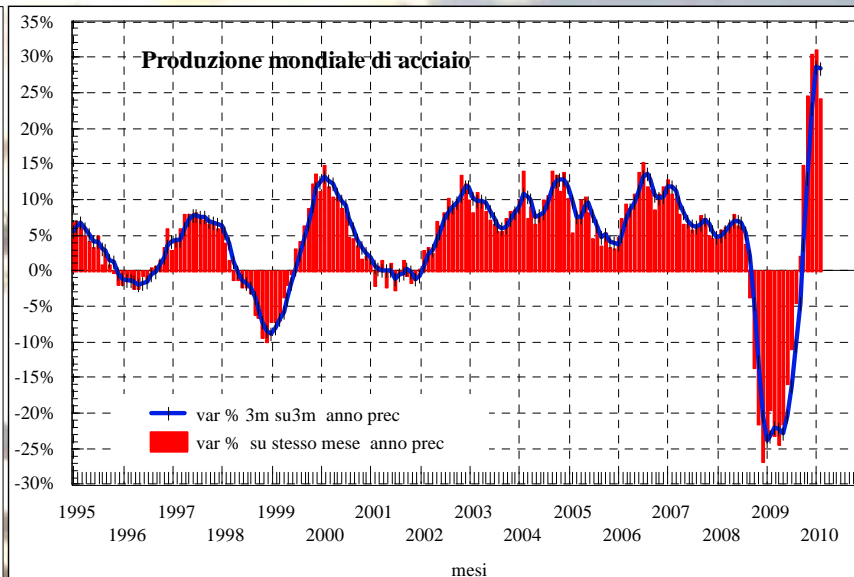
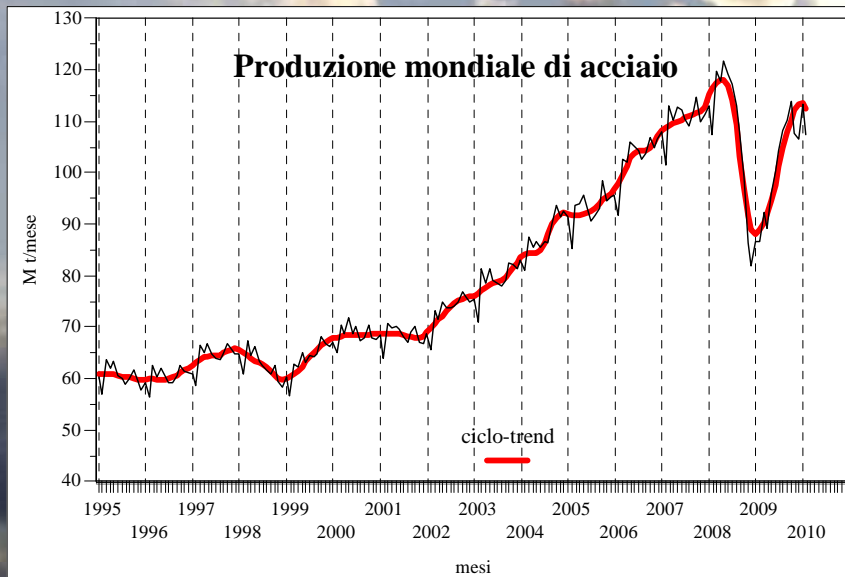


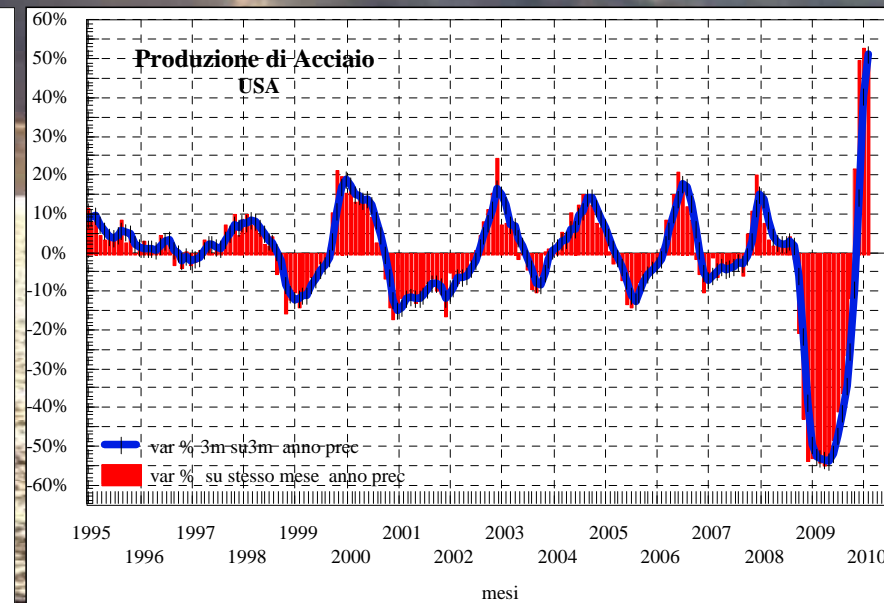
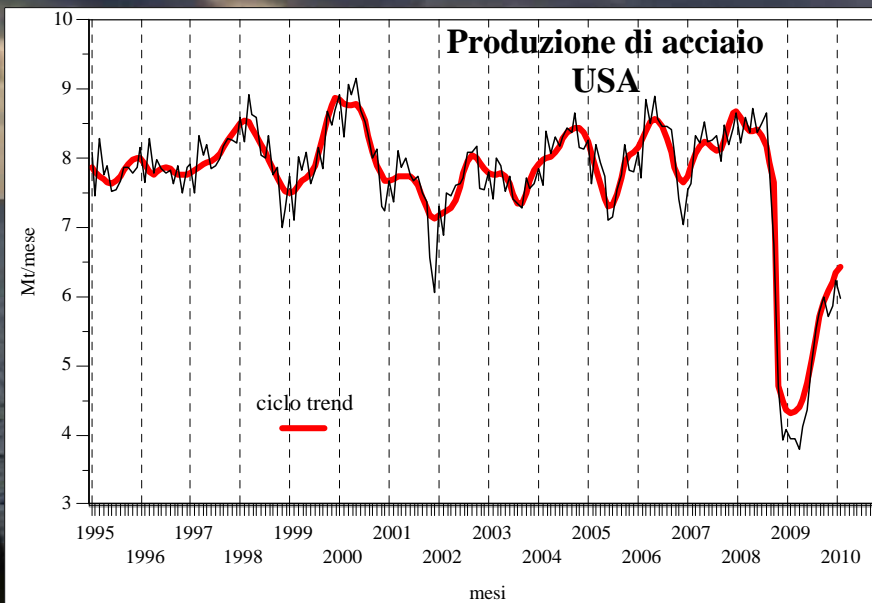
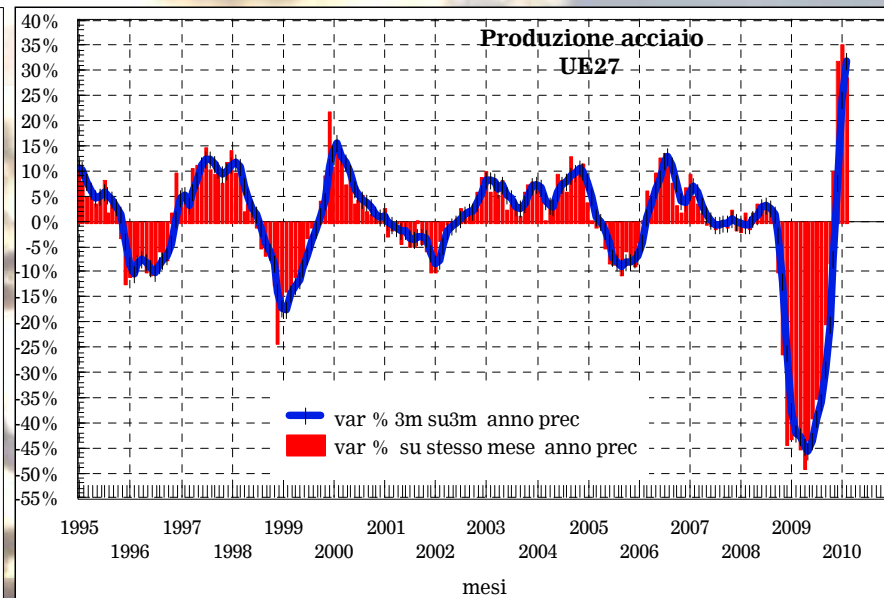
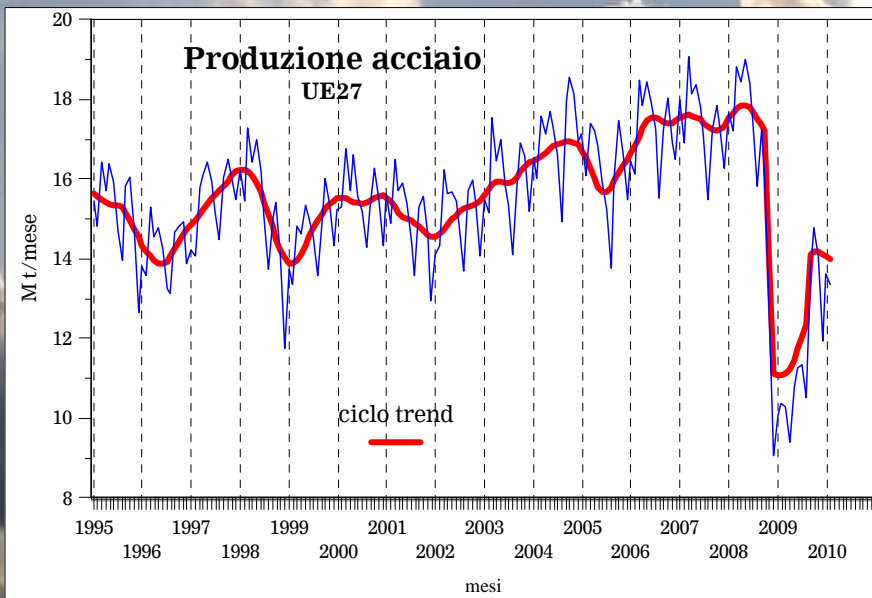


Produzione mondiale di acciaio

2009







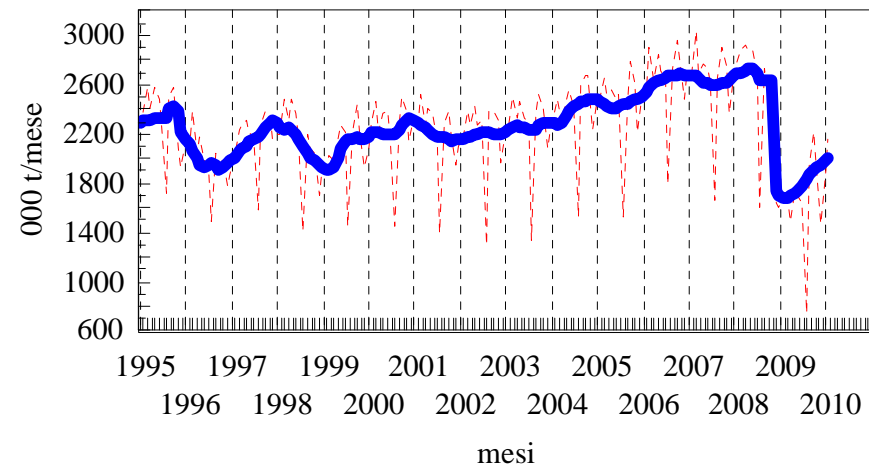
Italia



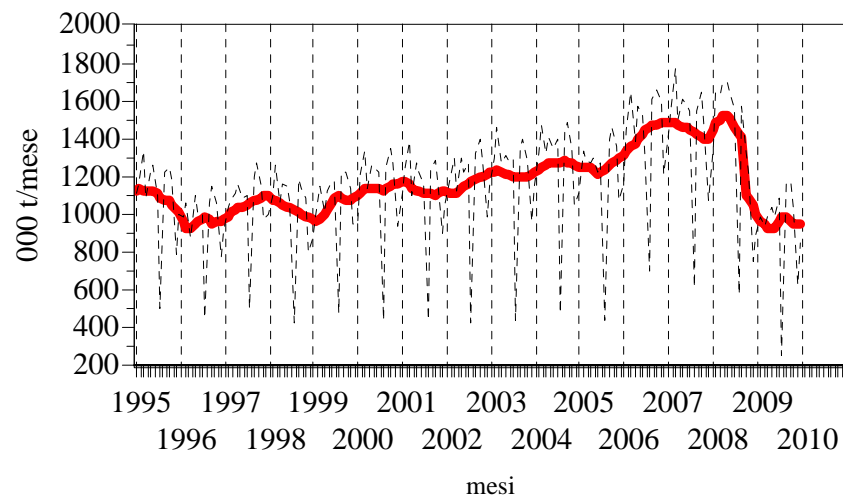
Federacciai

Italia

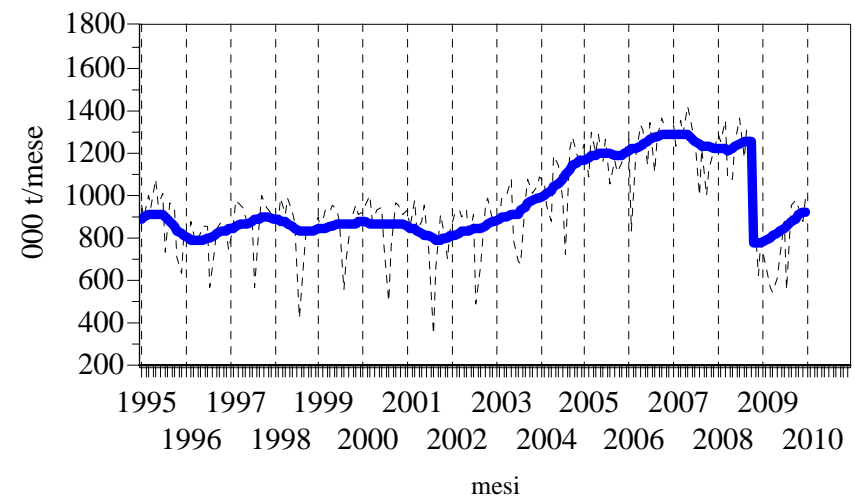
Produzione di acciaio

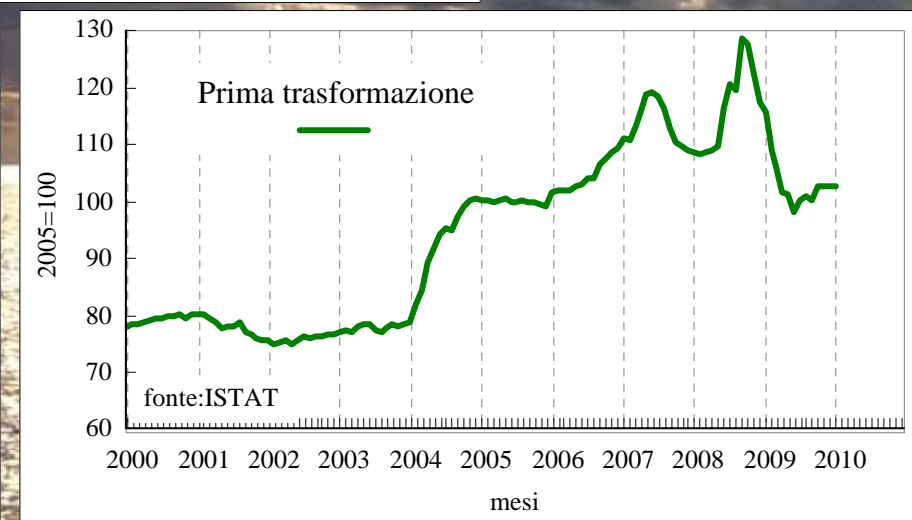
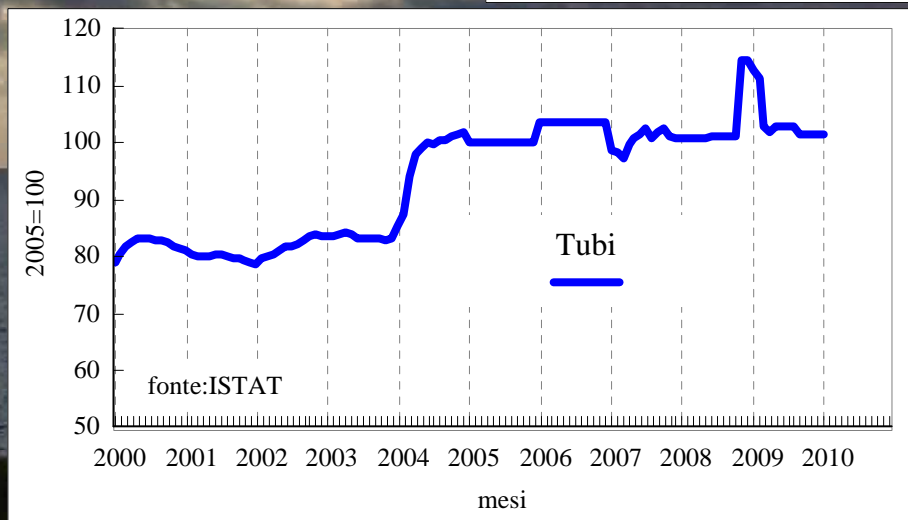


Produzione di laminati lunghi



Produzione di laminati piani

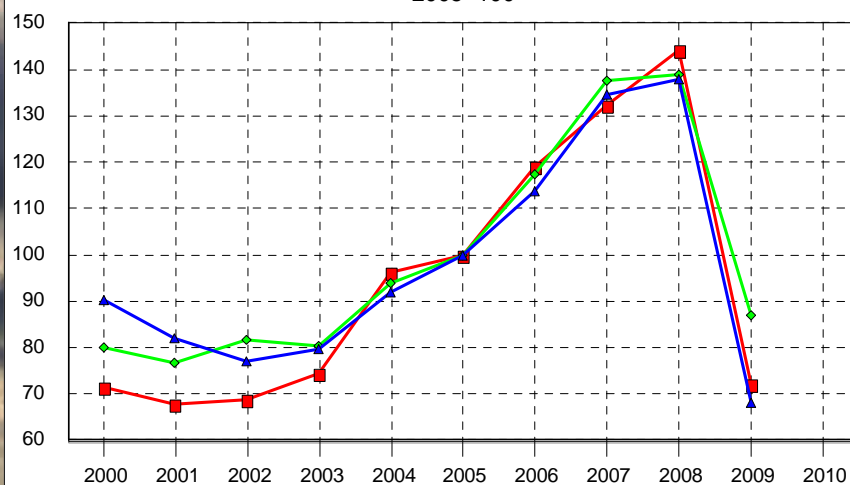




Italia

Indice del fatturato

2005=100

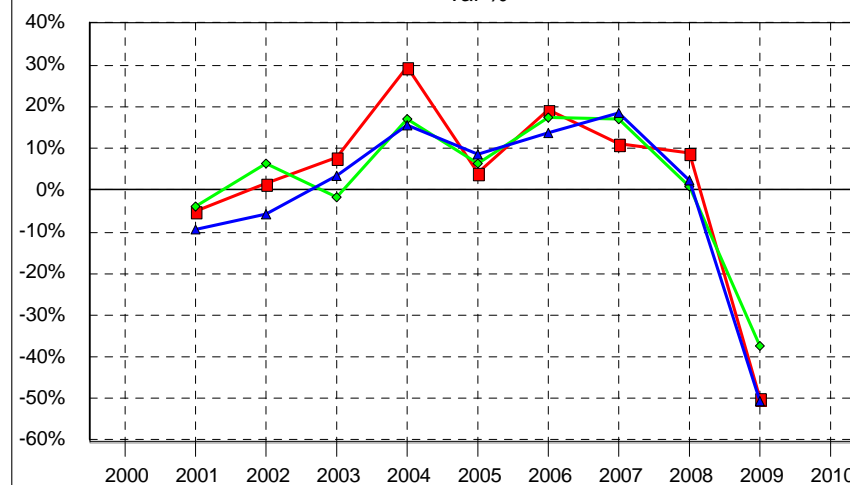


■ indice del fatturato totale/SIDERURGIA
 ◆ indice del fatturato totale/ TUBI, CONDOTTI, PROFILATI CAVI E RELATIVI ACCESSORI IN ACCIAIO (ESCLUSI QUELLI IN ACCIAIO COLATO)
 ▲ indice del fatturato totale/ ALTRI PRODOTTI DELLA PRIMA TRASFORMAZIONE DELL'ACCIAIO

fonte ISTAT

Indice del fatturato

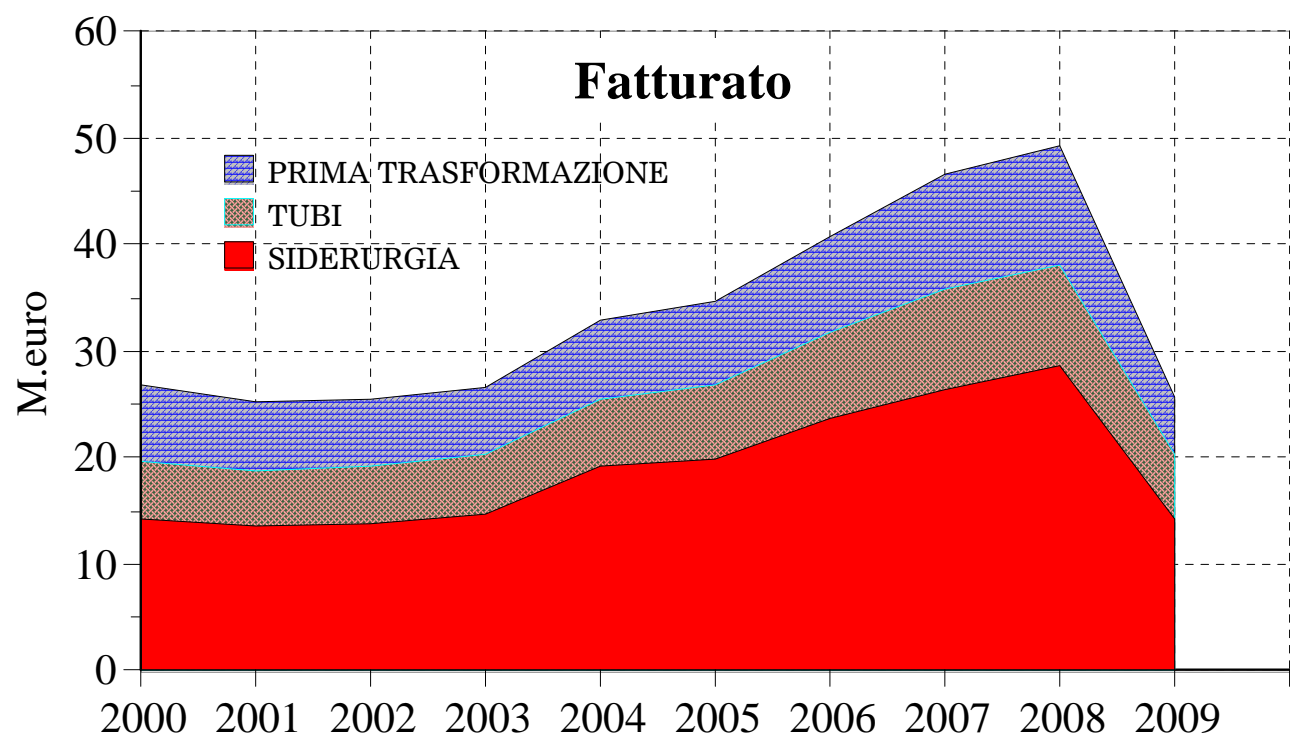
var %



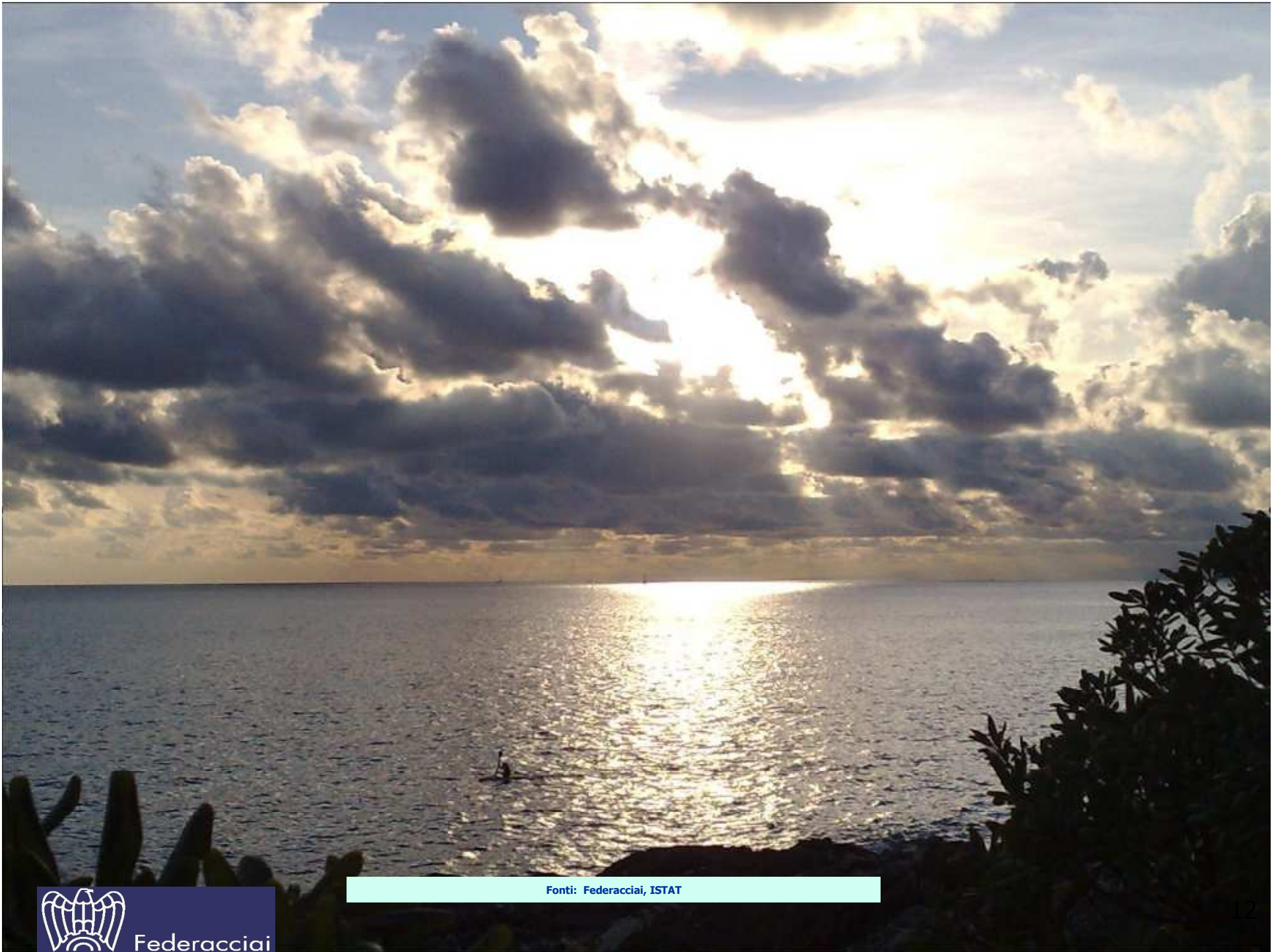
■ indice del fatturato totale/SIDERURGIA
 ◆ indice del fatturato totale/ TUBI, CONDOTTI, PROFILATI CAVI E RELATIVI ACCESSORI IN ACCIAIO (ESCLUSI QUELLI IN ACCIAIO COLATO)
 ▲ indice del fatturato totale/ ALTRI PRODOTTI DELLA PRIMA TRASFORMAZIONE DELL'ACCIAIO

fonte ISTAT

Italia



fonti: ISTAT 2005 Conti economici delle imprese 2005 altri anni elab. da indici del fatturato



Fonti: Federacciai, ISTAT



Federacciai